

# RAILTON MEEKS



## 13 Bridgelea Road

Withington, Manchester, M20 3BJ

£625 Per Calendar Month

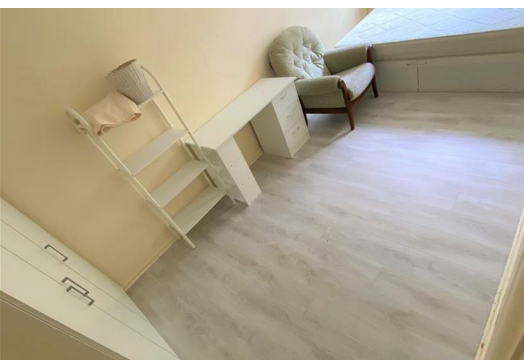


ONE DOUBLE ROOM TO RENT – GROUND FLOOR ONLY

Railton-Meeks are pleased to offer one furnished double bedroom within a well-presented six-bedroom townhouse. This is a room-only let, with shared access to communal areas.

The available room is located on the ground floor and comes fully furnished with a double bed, wardrobe, chest of drawers, desk, and chair. The ground floor also benefits from a shared bathroom with shower, toilet, and sink, as well as a utility area with a washer and dryer.

The property is situated in a popular and well-connected location close to Burton Road, Wilmslow Road, and Palatine Road, offering excellent transport links to Manchester city centre and local universities. Christie Hospital is just a short walk away, making this an ideal location for professionals working nearby.



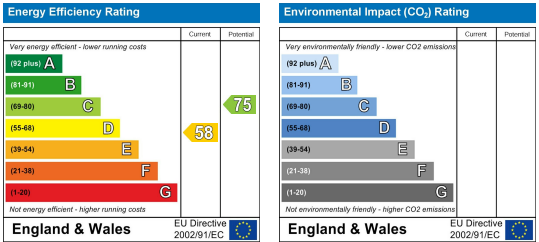
Area Map



Floor Plans



Energy Efficiency Graph



These particulars, whilst believed to be accurate are set out as a general outline only for guidance and do not constitute any part of an offer or contract. Intending purchasers should not rely on them as statements of representation of fact, but must satisfy themselves by inspection or otherwise as to their accuracy. No person in this firms employment has the authority to make or give any representation or warranty in respect of the property.